

# 4-BEDROOM

TOWNHOUSE

**Per CFASINST11101.12 (series) Military Family Housing offer is based on rank and family composition and not pet requirements or location preference.**

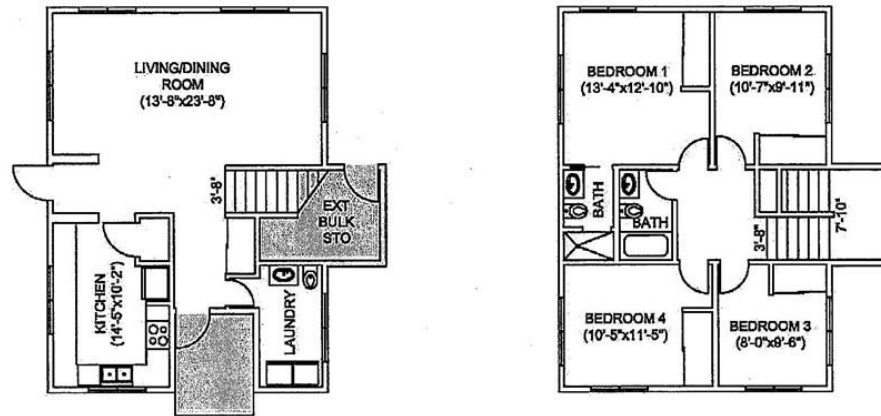




5011  
10 OCT

# FLOOR PLAN

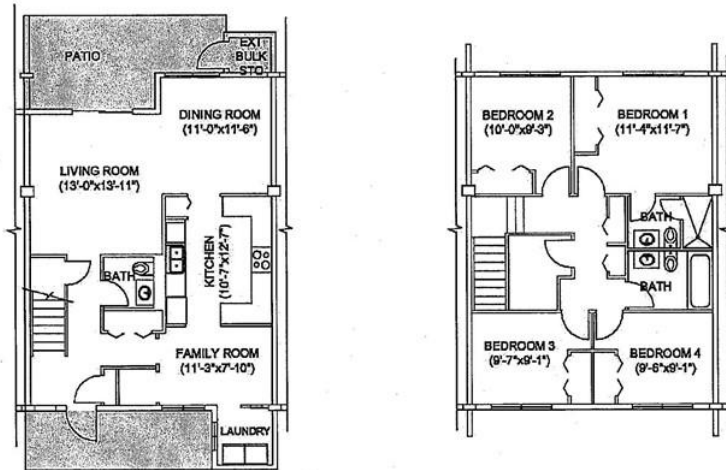
## Dragon Vale 4-Bedroom Townhouse (1)



Unit Type GSF: 1611 SF  
Areas Not Included in GSF: ■  
Year Built: 1969  
Year Renovated: 2009

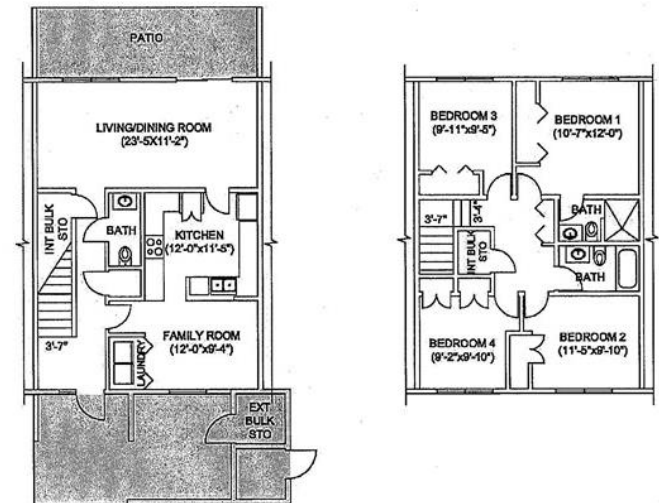


## Dragon Vale 4-Bedroom Townhouse (2)



Unit Type GSF: 1657 SF  
 Areas Not Included in GSF:   
 Year Built: 2011  
 Year Renovated: NA

## Hario Village 4-Bedroom Townhouse



Unit Type GSF: 1627 SF  
 Areas Not Included in GSF:   
 Year Built: 2012  
 Year Renovated: NA









